

AVENEL STREETSCAPE RENEWAL PROGRAM

Concept Plan [DRAFT]
Prepared by About Architecture for Strathbogie Shire
August 2021



PROJECT BACKGROUND

Within the 2020/21 budget, the Strathbogie Shire Council approved funding for works to be undertaken to renew and improve existing streetscapes within the shire.

This allocation has been supported by a grant from the Federal Government.

Effective streetscape design is an integral part of shaping a community’s identity, increasing civic pride and improving a sense of well-being and belonging. Areas for improvement may include but are not limited to; town entry features, street furniture, planting, pedestrian/traffic circulation and safety, public art, lighting, general wayfinding and signage.

PURPOSE OF THIS DOCUMENT

This document presents a conceptual streetscape renewal plan for the town of Avenel.

The intention of this streetscape renewal plan is to provide a visual guide for future streetscape development, rather than a literal or specific representation of works to be completed.

The recommendations include streetscape projects which can be implemented progressively as well as a palette of streetscape materials, finishes, fixtures and landscaping recommendations that work to maintain streetscape consistency, improve functionality and amenity and reflect a sense of identity and character for the area.

The project concentrates on the public realm, which includes the components of the streets and footpaths. Building facades are not included.

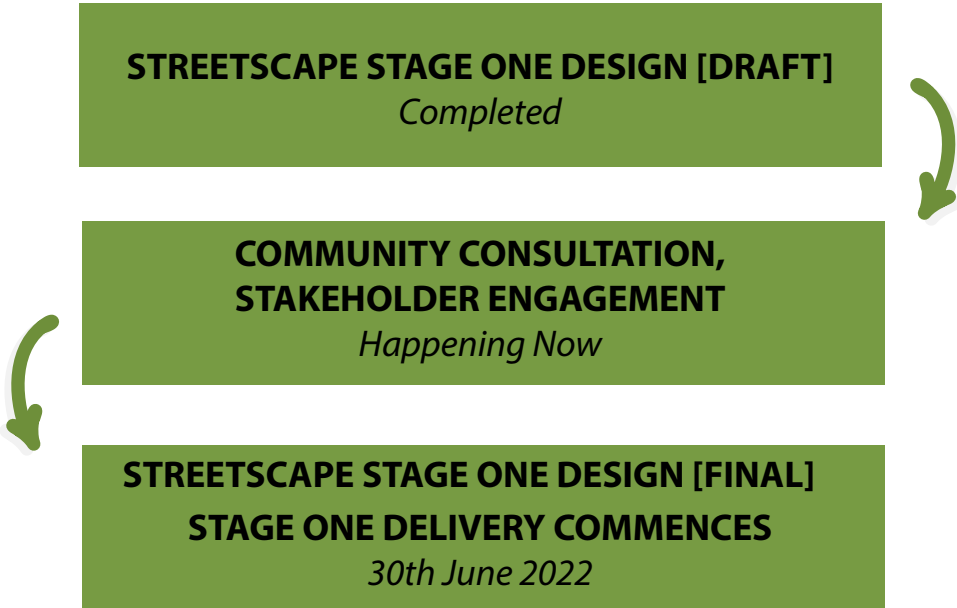
STUDY AREA

The focus of the study area is the town centre of Avenel, defined by connection between Bank Street & Queen Street.

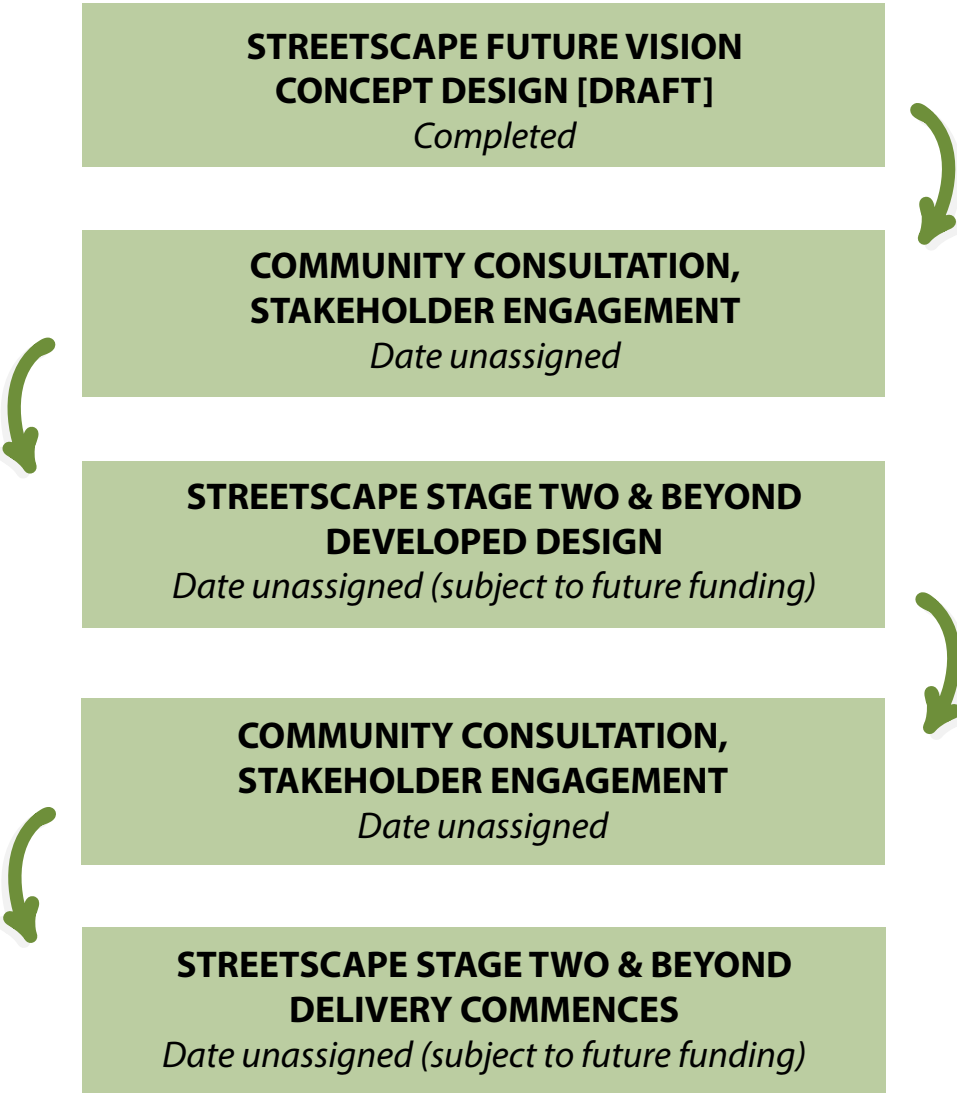
The study area includes intersections at Mitchell Street & Jones Street and Mitchell & Livingstone Street

PROJECT PHASING / TIMELINE

CURRENT PHASE



FUTURE PHASES



EXISTING CONDITIONS

[DRAFT]
Prepared by About Architecture for Strathbogie Shire
August 2021

KEY QUALITIES & STREETSCAPE CHARACTER

Avenel is characterised by its rural landscapes, landmarks and village feel. Established avenues of trees create a formal yet relaxed feel, whilst the focus of the town is centred around the railway precinct. Wide residential streets funnel to narrow shopping strips on either side of the railway line.

Streetscape renewal should consider bridging the connection between the two commercial areas to create a centralised and connected central business district.

As Avenel continues to develop, streetscape renewal should reflect and celebrate its surrounds while respecting its historic village atmosphere.



Established Pathways (in some areas)



Historic Buildings



Established Avenues of Ornamental Trees



Pedestrian Accessibility to Recreation Precinct



Pedestrian Wayfinding
(Vehicle wayfinding required)



Textured, heritage appeal

AREA FOR IMPROVEMENT & ADVERSE VISUAL IMPACTS



Entry Signage From the Freeway
The entry signage to Avenel township is minimal and does little to communicate the charm of Avenel township. Signage in this instance has the potential to make a positive first impression



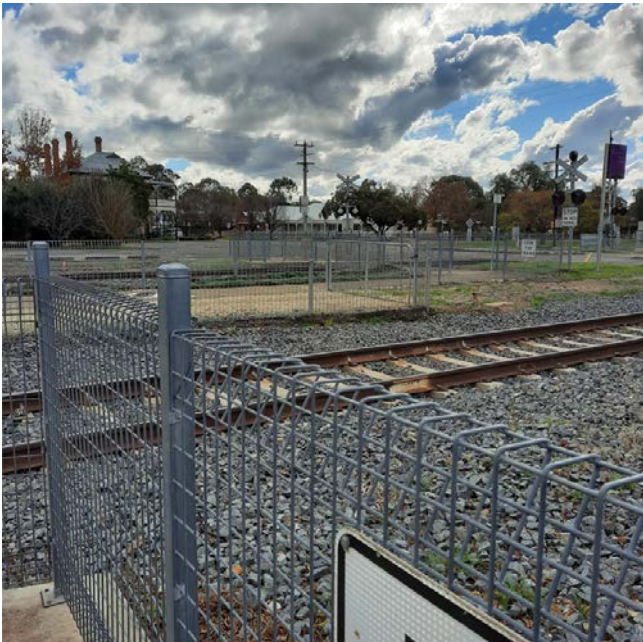
Vehicle Wayfinding
Wayfinding to the town centre for vehicles (particularly tourists) is lacking. The scale of directional signage lacks scale and is uninteresting. The opportunity exists to create a cohesive material palette for wayfinding signage.



Surface Treatments
Key pedestrian access between the two commercial precincts is unsightly, uneven and does not cater for all levels of pedestrian ability.



Connectivity
ConneCtivity for both pedestrians and vehicles across the railway line appears tired and underdone.



Visual Appeal
There are no appealing visual cues to encourage pedestrians to cross the railway tracks.



Landscaping & Fencing
Missed opportunities for landscaping in key areas. Fencing has the potential to be a key visual feature rather than a visual detractor.



Street Furniture
Bins have become visual clutter and obstacles for pedestrians.



Seating
Seating is limited.



Footpaths
Areas of narrow paths and uneven surface.

STAGE ONE

[DRAFT]

Prepared by About Architecture for Strathbogie Shire
August 2021

STAGE ONE - QUEEN STREET & WAYFINDING

The first stage of the streetscape renewal plan aims to deliver a portion of the project in the immediate term which utilises an existing funding agreement with the Federal government.

The following describes this stage of the streetscape renewal plan and the initial steps required to see it implemented.



DELIVERABLES

- Installation of entry signage and low level planting surrounding it
- Installation of overhead signage on Queen Street & Bank Street
- Verge extension at the end of Queen Street improving pedestrian movement
- Landscaping surrounding pedestrian railway crossing
- Installation of bark/ground cover and feature granite rocks where low level planting indicated
- Installation of advanced trees and low level planting
- Installation of new bench seats, bollards and bin surrounds on Queen Street

LEGEND

EVENT SPACE

PLAY AREA

ART OPPORTUNITY

EXISTING TREE

PROPOSED TREE

LOW LEVEL VEGETATION

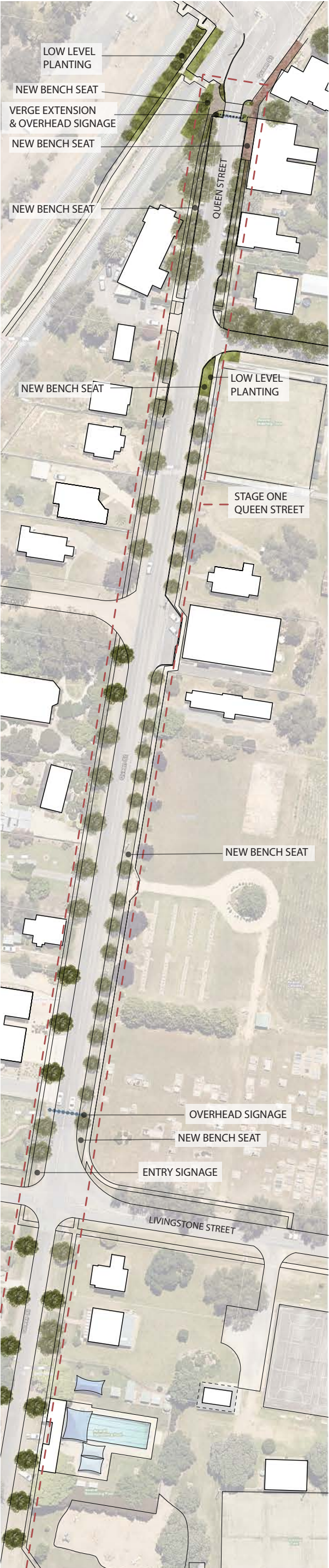
POINT(S) OF INTEREST SIGN

DIRECTIONAL SIGN

ENTRY SIGN

BINS

BIKE RACK



STREETSCAPE PLAN FUTURE VISION

[DRAFT]
Prepared by About Architecture for Strathbogie Shire
August 2021

THE STREETSCAPE PLAN

VISION & OBJECTIVES

Improve Visual Appeal

- Create a unified and visually appealing town
- Reinforce and improve existing streetscape character
- Improve arrival experience and wayfinding signage for vehicles.
- Encourage landscaping that is consistent, high-quality and represents the landscape character of the town
- Utilise degraded public space between two commercial zones as a feature public promenade.
- Feature landscaping and/or public artwork in selected locations
- Create a consistent material palette in signage and street furniture.

Improve Connection to Place

- Create a local sense of place by reinforcing identity and telling local stories through the choice of materials and placemaking
- Reinforce visual and physical connections to the surrounding landscape and heritage

Improve Access & Movement

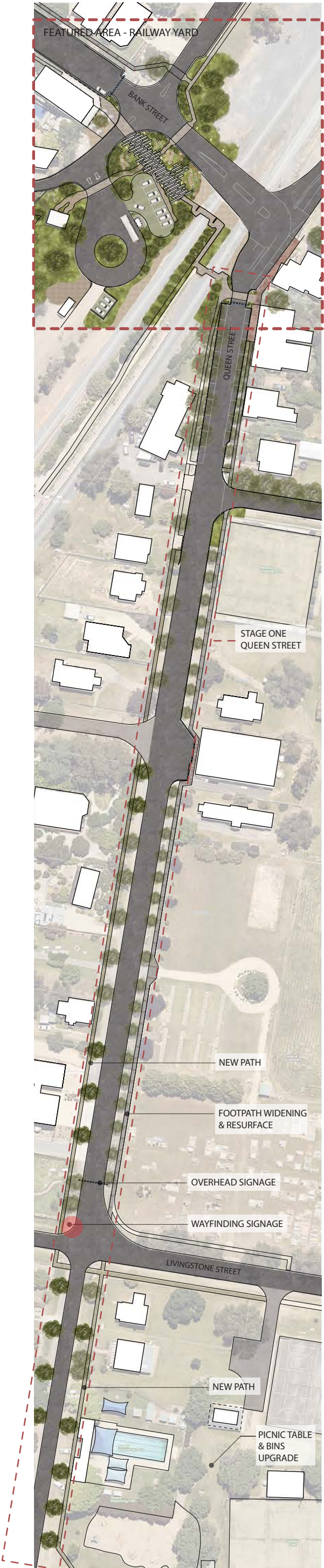
- Improve directional signage to guide visitors to the town centre.
- Connect the community and visitors to the key points of interest within the township
- Facilitate walkable streets
- Improve mobility access, circulation, safety and connectivity between the commercial precincts.
- Create links and wayfinding methods to enhance locals and visitors experience of the township with particular regard for key community assets - commercial areas, recreation hub and associated parkland and the station.
- Cater for all pedestrians through the upgrade of surface treatments on key thoroughfares.

Improve Activation & Diversity

- provide a central public domain with necessary street furniture and amenities
- Improve current land use at railway yard with upgrades to parking and pedestrian accessibility.
- Allow for diversity in the use of the railway yard space such as parking, community markets, centalised spAce for gathering, arts, play, resting and dining in a landscaped or sheltered setting.
- Formailse car parking options and wayfinding for visitors.

Improve Environmental Function

- Improve the environmental function of the street
- Increase areas of landscaping to improve passive cooling.
- Embrace opportunities to utilse solar energy for lighting.
- Increase irrigation potential and stormwater drainage.
- Replace landscape treatments that are at the end of their lifecycle
- Increase the capacity of existing green networks to enhance biodiversity and habitat corridors
- Ensure the retention and renewal of the significant mature street trees and the character of leafy streetscapes
- Increase the amount of permeable surfaces, soft landscape areas and shade trees.



FEATURED AREAS FUTURE VISION

[DRAFT]
Prepared by About Architecture for Strathbogie Shire
August 2021

FEATURED AREA - RAILWAY YARD

VISION & OBJECTIVES FOR THIS AREA

Public promenade created to connect the two commercial pecincts

Paved and exposed aggregate surface for Pedestrian walkway

Surface treatment (such as grasscrete) to formalise parking areas, whilst allowing flexibility for alternative public use

Installation of new street furniture

Introduce low level landscaping and grassed areas within promenade

Pathway connections to street crossing points

Feature trees and canopy structures to provide shaded seating areas

Paving to be applied across pedestrian crossings to prioritise pedestrian movement and encourage traffic calming












Pavilion and raised deck space for events and gathering

Consideration of lighting and power to key areas

Utilisation of overhead signage on either side of rail crossing to create visual cues connecting commercial precincts

Kerb and channel upgrades to formalise promenade and accommodate pedestrian crossing points.

LEGEND

 EVENT SPACE	 EXISTING TREE	 POINT(S) OF INTEREST SIGN	 BINS
 PLAY AREA	 PROPOSED TREE	 DIRECTIONAL SIGN	 BIKE RACK
 ART OPPORTUNITY	 LOW LEVEL VEGETATION	 ENTRY SIGN	



FEATURED AREA - RAILWAY YARD



FEATURED AREAS - SIGNAGE POINTS

VISION & OBJECTIVES FOR THESE AREAS

- Improve the overall arrival experience to the township of Avenel.
- Enhance the capacity for visitors to easily navigate their way to the town centre, in particular from entry off the Hume Freeway.
- Create a positive first impression that tells a story of the charm of the Avenel township.
- Create a cohesive material palette in signage that is relevant to the Avenel area.
- Utilise a dominant scale in the design and construction of wayfinding signage.
- Continue signage palette to guide pedestrians from one side of the railway tracks to the other. Height and scale required to create the visual cue.



GATEWAY SIGNAGE
Entry signage in a prominent position to improve arrival experience. Strength in scale and appropriate material selection to be considered in signage design.



SECONDARY GATEWAY SIGNAGE
Utilise secondary signage at key navigational points (see visualisations). Overhead navigational cues consistent with those proposed in the township.

LEGEND			
	EVENT SPACE		EXISTING TREE
	PLAY AREA		PROPOSED TREE
	ART OPPORTUNITY		LOW LEVEL VEGETATION
	POINT(S) OF INTEREST SIGN		DIRECTIONAL SIGN
	ENTRY SIGN		BINS
			BIKE RACK

FEATURED AREAS - GATEWAY AND NAVIGATIONAL SIGNAGE
MITCHELL & JONES STREET INTERSECTION

VISION & OBJECTIVES FOR THIS AREA

improve arrival experience and allow for ease of navigation to Avenel township.

Positive first impression that suggests the charm of Avenel.

Prominent scale and selection of materials that are relatable to the Avenel area.

Potential for lighting to allow for 24 hour efficacy in wayfinding.



FEATURED AREAS - GATEWAY AND NAVIGATIONAL SIGNAGE
LIVINGSTONE & MITCHELL STREET/HENRY STREET INTERSECTION



VISION & OBJECTIVES FOR THESE AREAS

Material Palette should remain consistent with gateway sign.

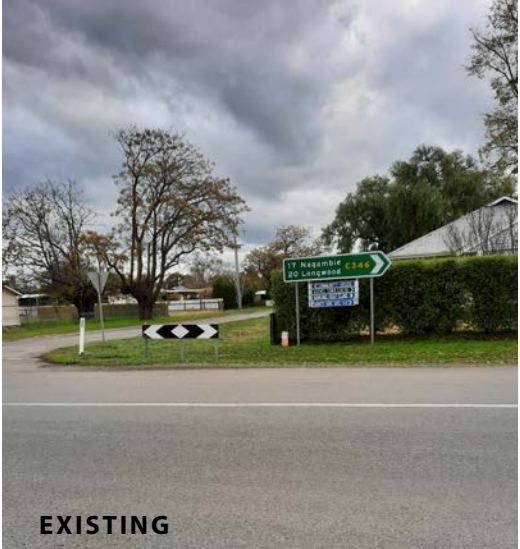
Scale to be prominent in terms of height to assist vision and vehicle guidance.

Associated planting, landscaping should be contextually considerate and allow for ease of maintenance/care.

Signage strategy to be continued within the township/proposed promenade area.



FEATURED AREAS - GATEWAY AND NAVIGATIONAL SIGNAGE
EWINGS ROAD & QUEEN STREET INTERSECTION



DESIGN ELEMENTS

[DRAFT]

Prepared by About Architecture for Strathbogie Shire
August 2021

MATERIAL PALETTE

PATHS, PAVEMENTS



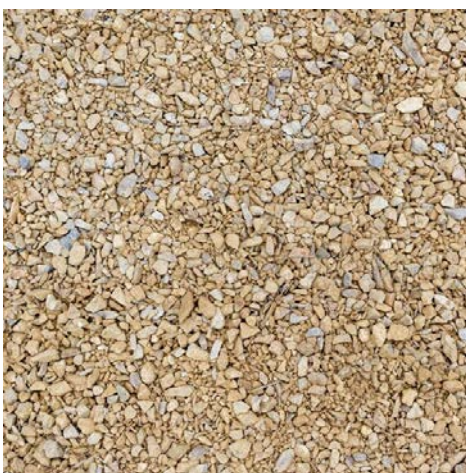
PROMENADE
Exposed Aggregate Concrete
(Colour guide: Mintaro Moonscape)



PROMENADE
Coloured Concrete Pavers
Colour: Wilderness



FORMAL PATHS
Concrete Pavement, Brick Joints & Edges



INFORMAL PATHS
Compacted Granite

PARKING/MIXED USE PUBLIC SPACE



PROPOSED
Location: Parking zone within proposed promenade area.
Key Attributes: structured/multi-purpose surface material
Key Material: Concrete and grass



FENCING



PROPOSED
Key Material: Timber
Predominant Use: Railway fencing



ALTERNATIVE
Key Material: Steel
Predominant Use: Railway fencing

OVERHEAD SIGNAGE



Contemporary or more traditional examples provided.



These overhead sign examples will provide and add to the village atmosphere and connect the two main streets. Defining more clearly the village of Avenel.



Enagement with local arts and culture groups will provide voice and identity on the deisgn of these signs

EXAMPLES
Location: Queen & Bank Street Entry Points

MATERIAL PALETTE

KEY MATERIALS



MILD STEEL, SEALED



RED BRICK



LOCAL GRANITE



LOCAL HARDWOOD TIMBER

SEATING



TIMBER BLOCK SEATING
Location: Promenade
Key Attributes: Hardwood Timber
Seating blocks to compliment formal seating throughout.



PLANTING WITHIN SEATING
Location: Promenade
Key Attributes: Planter boxes to be incorporated within the style of seating. Planting to compliment the selection within surrounding landscape.



TIMBER SEATING WITH BACKREST
Location: Promenade
Key Attributes: Hardwood Timber
option with back support



OPEN SIDED SEATING
Location: Promenade
Key Attributes: Hardwood Timber,
allows for sitting on either side of seating.



PICNIC BENCHES
Location: Jubilee Park
Key Attributes: Hardwood Timber
Steel or Concrete Base



STRAIGHT SEATING
Location: Jubilee Park
Key Attributes: Mild Steel & Hardwood Timber
Non-Back Support



STRAIGHT SEATING
Location: Jubilee Park
Key Attributes: Mild Steel & Hardwood Timber
Back Support

MATERIAL PALETTE

OTHER STREET FIXTURES



BIKE RACK
Example
Key Attributes: Simple
Key Material: Steel



BOLLARD
Example
Key Attributes: Simple With Lighting
Key Material: Timber



BINS
Example
Key Attributes: Dog Bags
Key Material: Steel, Timber



DRINKING
Example
Key Attributes: Bowl Refill, Bottle Refill & Bubbler
Key Material: Stainless Steel, Timber

LIGHTING



POLE LIGHTING
Simple aesthetic, Contemporary



UPLIGHTING
In-ground spikes to uplight trees



OVERHEAD ROAD LIGHTS
To create nighttime visual wayfinding cues. Provides structure for event lighting and seasonal decorations

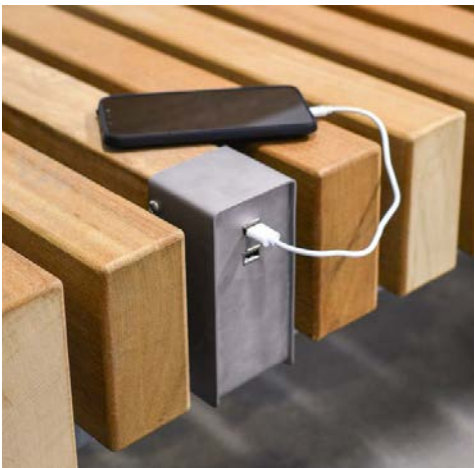
SHADE STRUCTURES



PROPOSED
Examples
Location: Proposed Promenade area, Proposed amenities
Key Attributes: Organic Shape, Mix of covered and shaded area.
Key Material: Steel, Timber



OTHER STREET INITIATIVES



USB CHARGING
Integrated into Seating



EV CHARGING
In Car Parking Areas

LANDSCAPING



LOW LEVEL PLANTING EXAMPLES
Lemon Beauty Heads, Wingless Bluebush, Nodding Saltbush, Woolly New Holland Daisy, Common Wheatgrass, Westringia Fruticosa, Lomandra Tanika, Ficinia Nodosa, Kangaroo Grass, Lomandra longifoia, Lomandra 'lime light', Wattle Mat-Rush, Juncus psammophilus, Pycnosaurus globulus, Drumsticks, Woolly grevillea – prostrate form, Acacia mitchellii, Bristle Wallaby Grass, Common Everlasting, Kidney Weed, Weeping Grass



SHRUB EXAMPLES
White Correa, Wyeena Flax Lily, Mallee Wattle, Gold-dust Wattle, Golden Wattle, Sweet Bursaria

LANDSCAPING REFERENCE GUIDE

Refer to the Ecological Vegetation Class Bioregion Benchmark for Vegetation Quality Assessment in the Victorian Riverina bioregion. EVC 55_62: Riverina Plains Grassy Woodland (syn. Plains Woodland) and EVC 56: Riverine Grassy Woodlands or Forests

This streetscape renewal concept incorporates a mix of local indigenous planting to improve local biodiversity, promote sustainable local plantings and provide a sense of identity and connection to place through the landscape approach. The use of local and indigenous plantings has many benefits including local availability, environmental tolerance, reducing the effects of climate change and improved water use. The additional benefit of involving existing community groups (that have interest and expert knowledge in conservation, land care and their local environment) into the plant selection process, has the ability to also see this landscaping approach thrive.

OTHER LANDSCAPING TREATMENTS



LANDSCAPING ROCKS
Predominant Use: Mixed in with low-level planting areas

PROPOSED GARDEN EDGING
Predominant Use: Garden Bed Edges

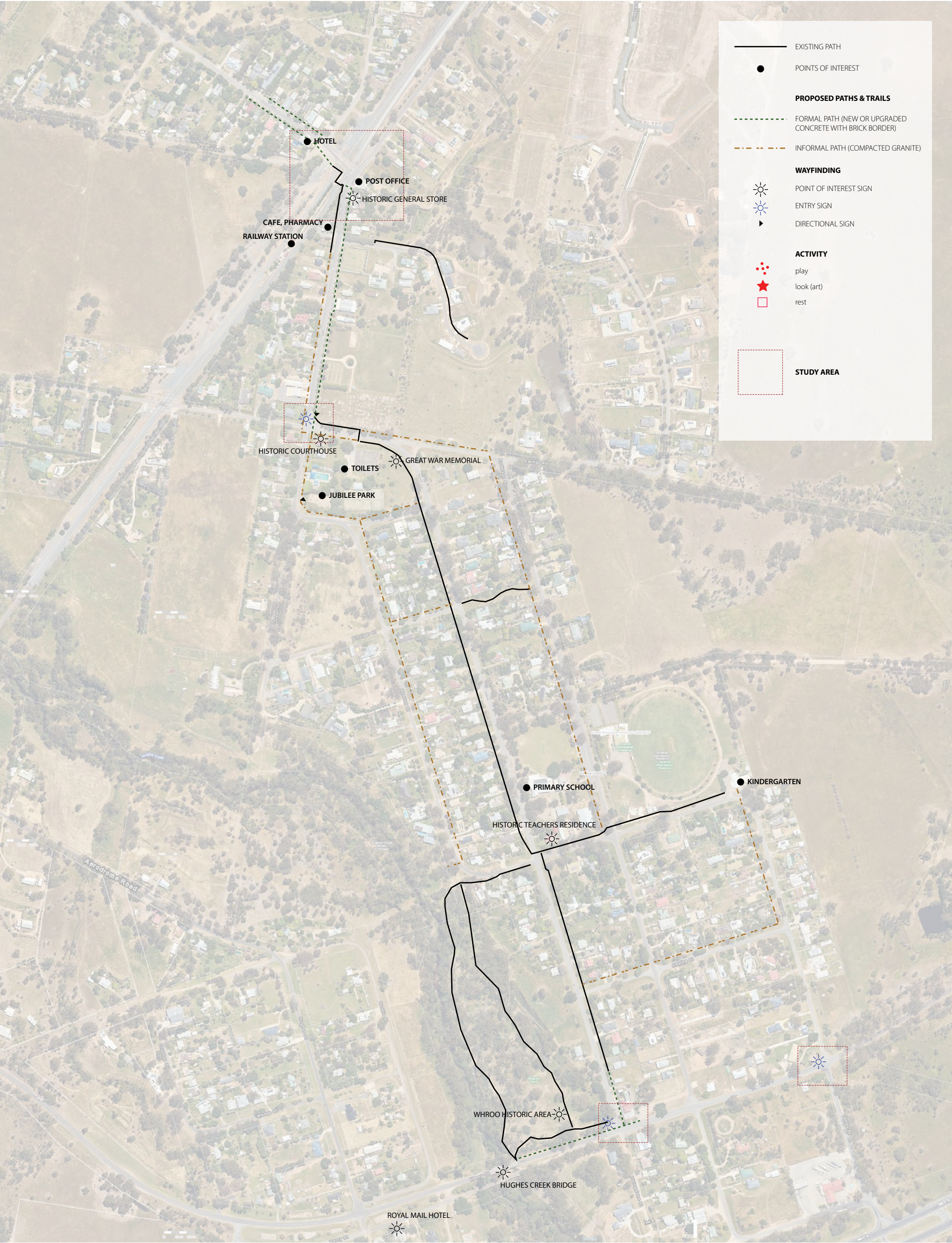


MEDIUM TREE EXAMPLES
Tristanopsis laurina 'Luscious',
Eucalyptus mannifera 'Little
 Spotty', Lemon Squash *Corymbia*
citriodora, *Corymbia citriodora*
 'Scentuous' syn. 'Dwarf Pink',
Acacia implexa - Hickory Wattle,
 Lightwood, Weeping *Pittosporum*



LARGE TREE EXAMPLES
Eucalyptus leucoxylon
megalocarpa, *Brachychiton*
populneus, *Lophostemon*
confertus

CONNECTIVITY



COMMUNITY INVOLVEMENT & IMPLEMENTATION

Involvement and engagement with local groups is key to achieving the best outcome for the streetscape renewal program.

Community groups in Avenel such as the Euroa Arboretum and the Avenel Action Group can provide a wealth of knowledge and understanding of desired local outcomes in particular to plant selection and long-term maintenance strategies.

Other community groups with interest in arts and culture can provide a local voice and identity to furniture design, signage design and identified art opportunities.

Engaging the skills of these groups and their networks within the community as part of the implementation process will improve;

Knowledge Transfer

Local Wealth Transfer

Community Involvement

Site Specific and Appropriate Outcomes

Community Ownership

Community Socialisation & Well-Being

